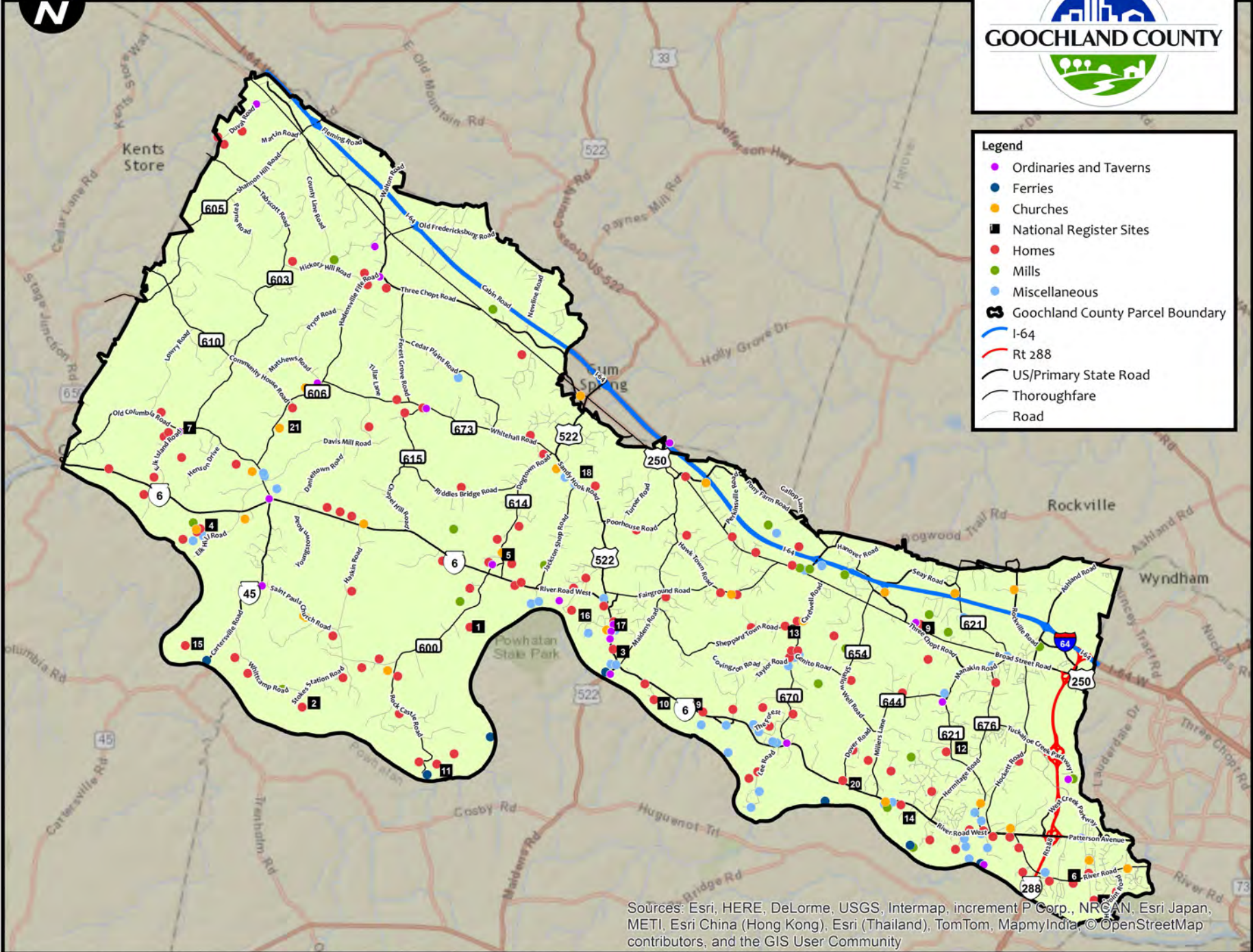


# 2035 Comp Plan Map - 22 - Natural & Historic Resources - Historical & Cultural Resources



**Legend**

- Ordinaries and Taverns
- Ferries
- Churches
- National Register Sites
- Homes
- Mills
- Miscellaneous
- Goochland County Parcel Boundary
- I-64
- Rt 288
- US/Primary State Road
- Thoroughfare
- Road



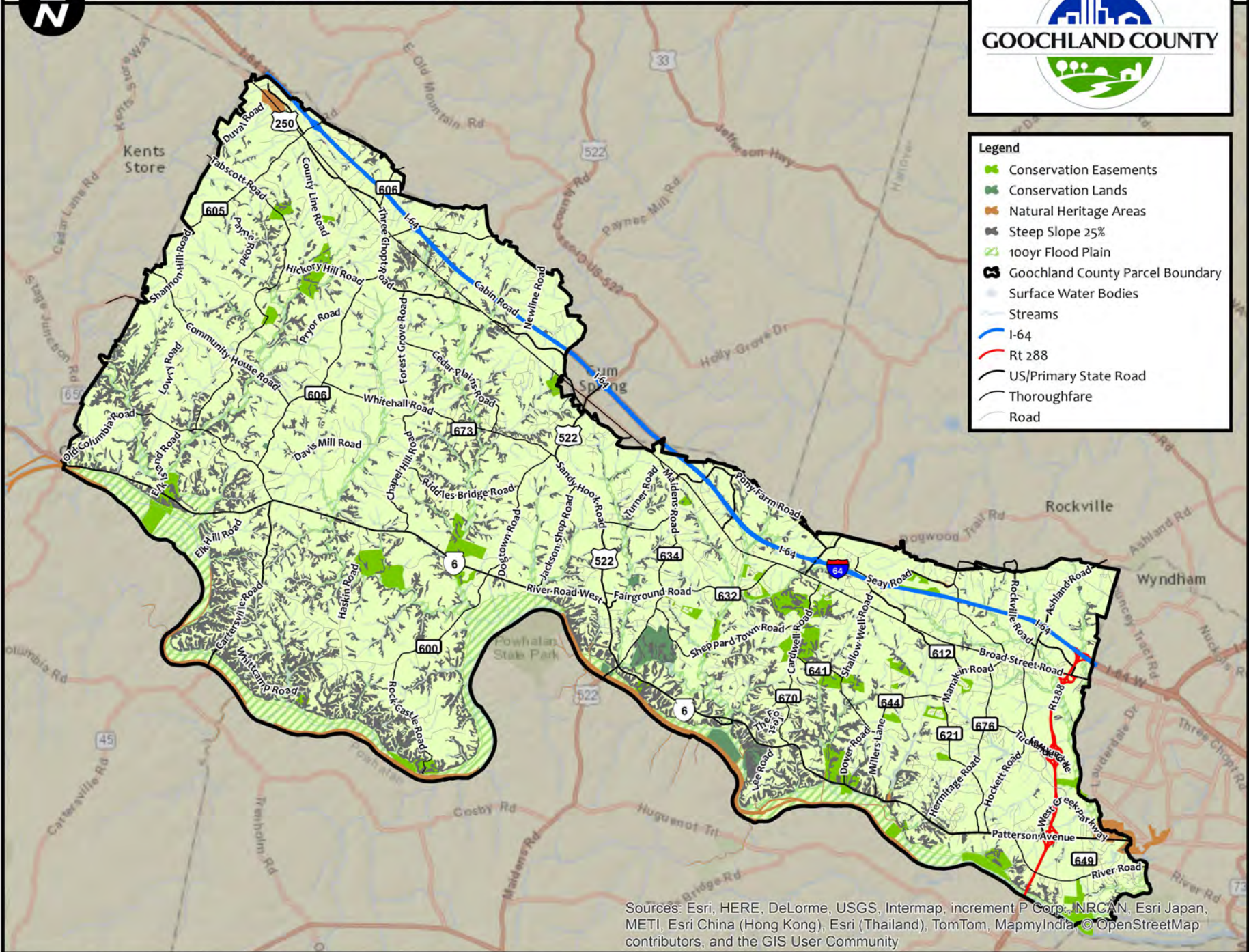
Sources: Esri, HERE, DeLorme, USGS, Intermap, increment P Corp., NRCAN, Esri Japan, METI, Esri China (Hong Kong), Esri (Thailand), TomTom, MapmyIndia, © OpenStreetMap contributors, and the GIS User Community

# 2035 Comp Plan Map - 23 - Goochland Conservation Lands



**Legend**

- Conservation Easements
- Conservation Lands
- Natural Heritage Areas
- Steep Slope 25%
- 100yr Flood Plain
- Goochland County Parcel Boundary
- Surface Water Bodies
- Streams
- I-64
- Rt 288
- US/Primary State Road
- Thoroughfare
- Road



Sources: Esri, HERE, DeLorme, USGS, Intermap, increment P Corp., NRCAN, Esri Japan, METI, Esri China (Hong Kong), Esri (Thailand), TomTom, MapmyIndia, © OpenStreetMap contributors, and the GIS User Community



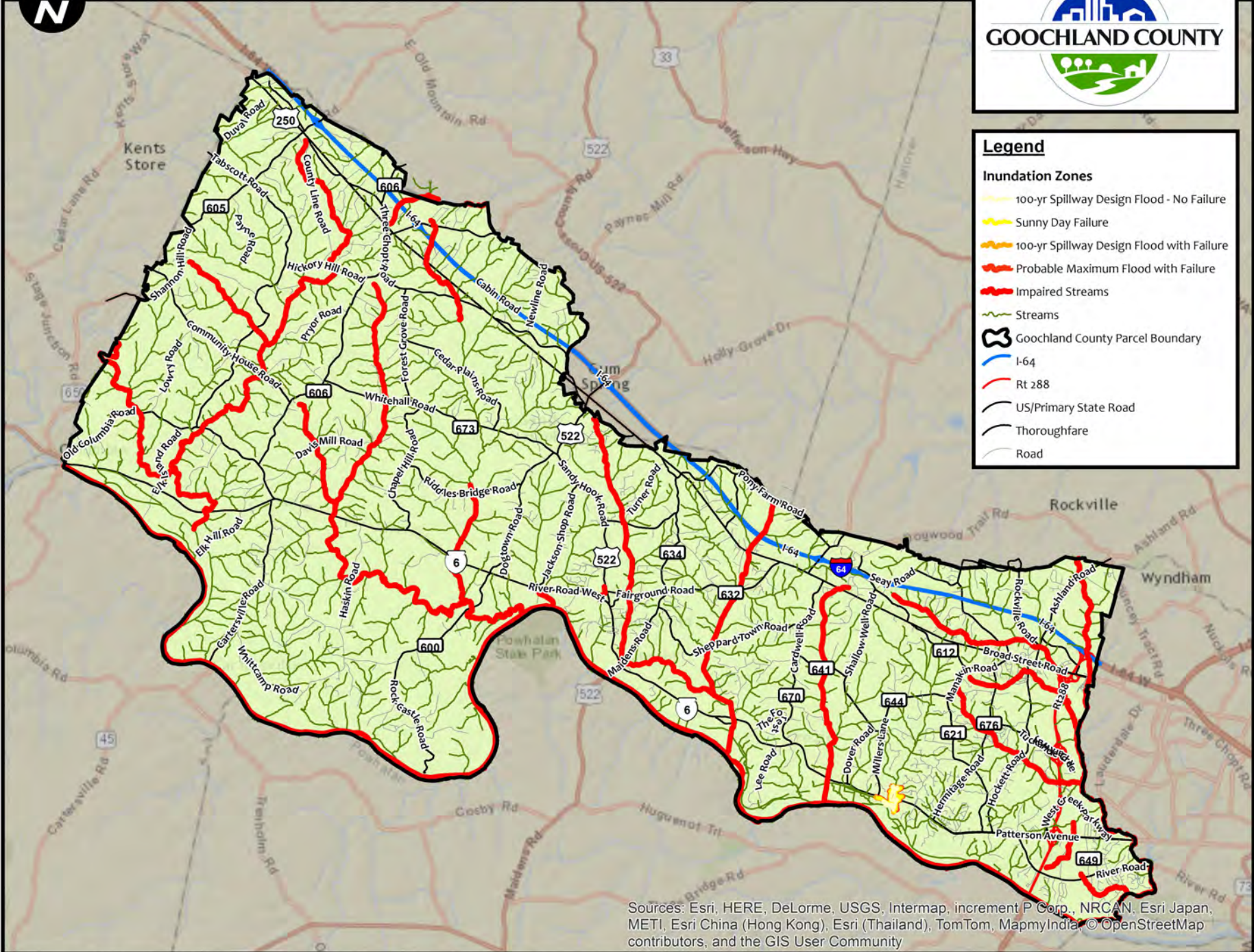
# 2035 Comp Plan Map - 24 - Natural & Historic Resources - River & Streams



## Legend

### Inundation Zones

- 100-yr Spillway Design Flood - No Failure
- Sunny Day Failure
- 100-yr Spillway Design Flood with Failure
- Probable Maximum Flood with Failure
- Impaired Streams
- Streams
- Goochland County Parcel Boundary
- I-64
- Rt 288
- US/Primary State Road
- Thoroughfare
- Road



Sources: Esri, HERE, DeLorme, USGS, Intermap, increment P Corp., NRCAN, Esri Japan, METI, Esri China (Hong Kong), Esri (Thailand), TomTom, MapmyIndia, © OpenStreetMap contributors, and the GIS User Community

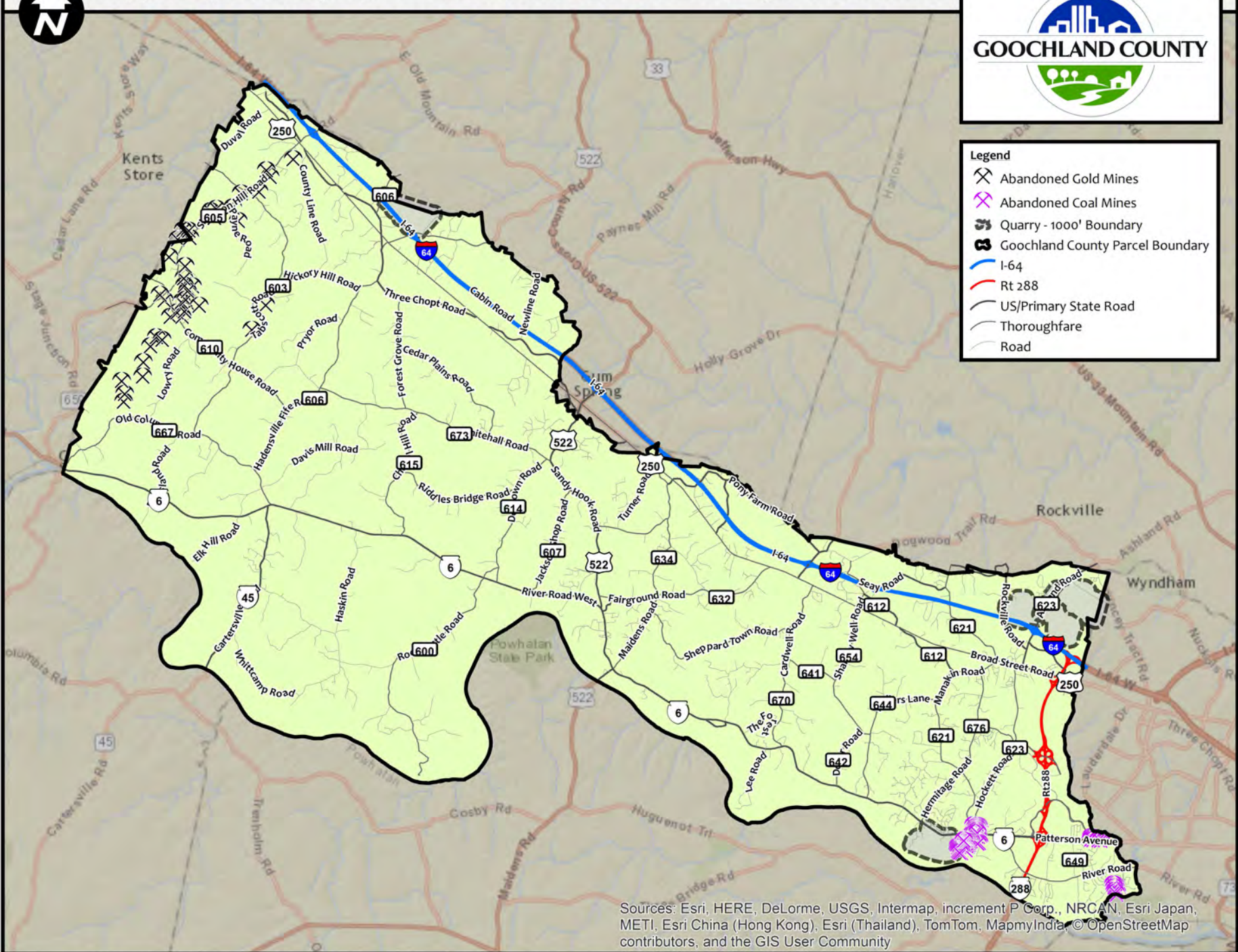


# 2035 Comp Plan Map - 25 - Natural & Historical Resources - Quarries & Mines



**Legend**

- Abandoned Gold Mines
- Abandoned Coal Mines
- Quarry - 1000' Boundary
- Goochland County Parcel Boundary
- I-64
- Rt 288
- US/Primary State Road
- Thoroughfare
- Road



Sources: Esri, HERE, DeLorme, USGS, Intermap, increment P Corp., NRCAN, Esri Japan, METI, Esri China (Hong Kong), Esri (Thailand), TomTom, MapmyIndia, © OpenStreetMap contributors, and the GIS User Community